

F300030.TIF

A WIDE RANGE OF ORBITAL MOTORS

Sauer-Danfoss is a world leader within production of low speed orbital motors with high torque. We can offer more than 1600 different orbital motors, categorised in types, variants and sizes (incl. different shaft versions).

The motors vary in size (rated displacement) from 8 cm³ (0.50 in³) to 800 cm³ (48.9 in³) per revolution.

Speeds range up to approx. 2500 min⁻¹ (rpm) for the smallest type and up to approx 600 min⁻¹ (rpm) for the largest type.

Maximum operating torques vary from 13 Nm (115 lbf-in] to 2700 Nm (24.000 lbf-in] (peak) and maximum outputs are from 2.0 kW (2.7 hp] to 70 kW (95 hp].

Characteristic features:

- Smooth running over the entire speed range
- Constant operating torque over a wide speed range
- High starting torque
- High return pressure without the use of drain line (High pressure shaft seal)
- High efficiency
- Long life under extreme operating conditions
- Robust and compact design
- High radial and axial bearing capacity
- For applications in both open and closed loop hydraulic systems
- Suitable for a wide variety of hydraulics fluids

© 2001 Sauer-Danfoss

Sauer-Danfoss can accept no responsibility for possible errors in catalogues, brochures and other printed material. Sauer-Danfoss reserves the right to alter its products without prior notice. This also applies to products already ordered provided that such alterations can be made without subsequent changes being necessary in specifications already agreed. All trademarks in this material are properties of the respective companies. Sauer-Danfoss and the Sauer-Danfoss logotype are trademarks of the Sauer-Danfoss Group. All rights reserved.

Frontpage: F300029.TIF, F300044.TIF, F300028.TIF, F300045.TIF, Drawing 151-1864

The programme is characterised by technical features appealing to a large number of applications and a part of the programme is characterised by motors that can be adapted to a given application. Adaptions comprise the following variants among others:

- Motors with corrosion resistant parts
- Wheel motors with recessed mounting flange
- OMP, OMR- motors with needle bearing
- OMR motor in low leakage version
- OMR motors in a super low leakage version
- Short motors without bearings
- Ultra short motors
- Motors with integrated positive holding brake
- Motors with integrated negative holding brake
- Motors with integrated flushing valve
- Motors with speed sensor
- Motors with tacho connection
- All motors are available with black finish paint

Planetary gears

Sauer - Danfoss complements the motor range with a complete programme of planetary gears adapted to suit. The combination of motors and gears makes it possible to obtain smooth running at fractional speeds and with torques up to 650.000 Nm (5.800.000 lbf-in].

The Sauer–Danfoss LSHT motors are used in the following application areas:

- Construction equipment
- Agricultural equipment
- Material handling & Lifting equipment
- Forestry equipment
- Lawn and turf equipment
- Special purpose
- Machine tools and stationary equipment
- Marine equipment

SURVEY OF LITERATURE WITH TECHNICAL DATA ON SAUER-DANFOSS ORBITAL MOTORS

Detailed data on all Sauer-Danfoss orbital motors can be found in our motor catalogue, which is divided into 5 individual subcatalogues:

- General information on Sauer-Danfoss orbital motors: function, use, selection of orbital motor, hydraulic systems, etc.
- Technical data on small motors: OML and OMM
- Technical data on medium sized motors: OMP, OMR, OMH and OMEW
- Technical data on medium sized motors: DH and DS
- Technical data on large motors: OMS, OMT and OMV
- Technical data on large motors: TMT

A general survey brochure on Sauer-Danfoss orbital motors gives a quick motor reference based on power, torque, speed and capabilities.

CONTENTS

	Page
OML and OMM	4
Speed, torque and output	4
OML	6
Versions	6
Code numbers	7
Technical data	8-14
Technical data (e.g. speed, torque pressure etc.)	8
Max. permissible shaft seal pressure.....	9
Pressure drop, oil flow in drain line, direction of shaft rotation	9-10
Permissible shaft loads	10
Function diagrams	11-12
Shaft version	13
Port thread versions.....	14
Dimensions	15
OMM	18
Versions	18
Code numbers	19
Technical data	20-27
Technical data (e.g. speed, torque pressure etc.)	20
Max. permissible shaft seal pressure.....	21
Pressure drop, oil flow in drain line, direction of shaft rotation	21-22
Permissible shaft loads	22
Function diagrams	23-25
Shaft version	26
Port thread versions.....	27
Dimensions	28
Weight of motors	34
Hydraulic Systems	35
Installation of the Sauer-Danfoss hydraulic motors.....	35
Starting up and running in the hydraulic system	35
Operation.....	35
Maintenance.....	35

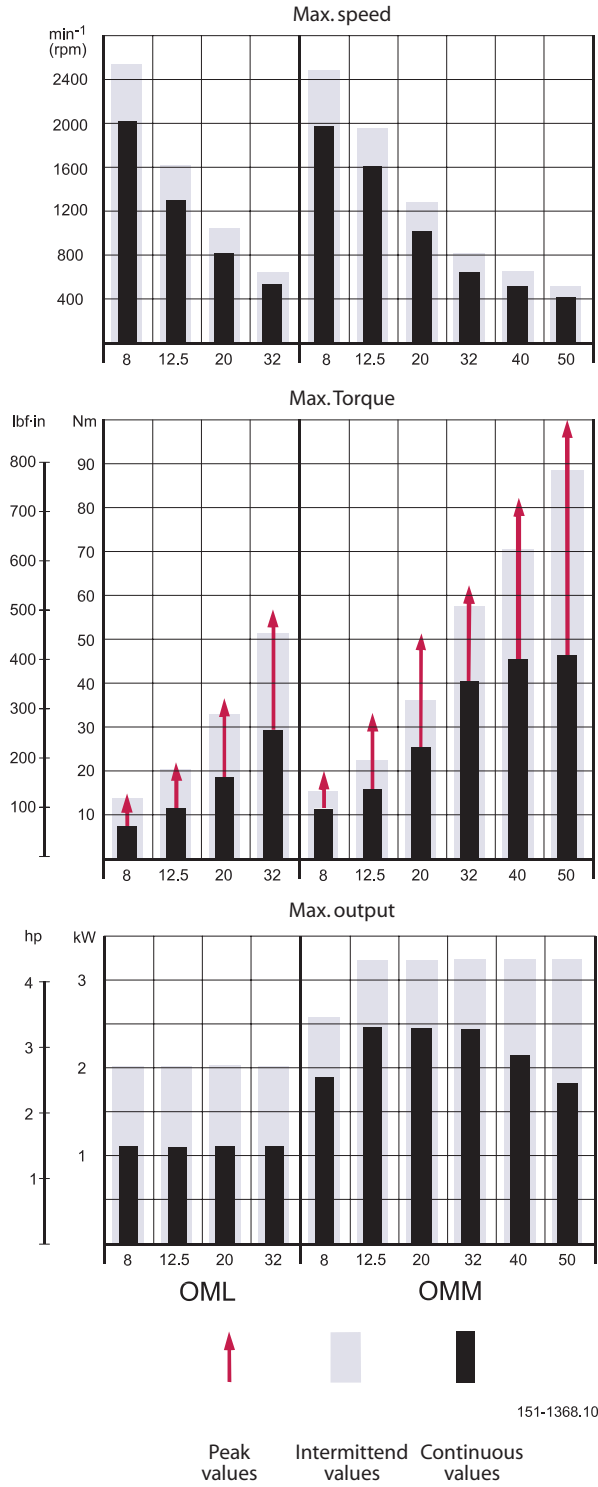
SPEED, TORQUE AND OUTPUT

The bar diagrams, see page 5, are useful for a quick selection of relevant motor size for the application. The final motor size can be determined by using the function diagram for each motor size.

- OML can be found on pages 11 - 12
- OMM can be found on pages 23 - 25

The function diagrams are based on actual tests on a representative number of motors from our production. The diagrams apply to a return pressure between 5 and 10 bar [75 and 150 psi] when using mineral based hydraulic oil with a viscosity of 35 mm²/s [165 SUS] and a temperature of 50°C [120°F]. For further explanation concerning how to read and use the function diagrams, please consult the paragraph "Selection of motor size" in the technical information "General" DKMH.PK.100.G2.02 520L0232.

SPEED, TORQUE AND OUTPUT



VERSIONS

Mounting	Shaft	Port size	European version	US version	Side port version	End port version	Flange port version	Standard shaft seal	High pressure shaft seal	Drain connection	Check valve	Specials	Main type designation
Front, 4 × M5	Cyl. 16 mm	G 1/4	X			X		X		No	Yes		OML
Front, 4 × 10-32 UNF	Cyl. 5/8 in	7/16 - 20 UNF		X		X		X		No	Yes		OML

Function diagram - see page: →

Features available (options):
 Painted

CODE NUMBERS

CODE NUMBERS	DISPLACEMENT [cm ³]				Technical data – Page	Dimensions – Page
	8	12.5	20	32		
151G	2001	2002	2003	2004	8	15
151G	2021	2022	2023	2024	8	16
→	11	11	12	12		

Ordering

Add the four digit prefix “151G” to the four digit numbers from the chart for complete code number.

Example:

151G2001 for an OML 8 with front mounting (4 × M5), cyl. 16 mm shaft and port size G 1/4.

Note: Orders will not be accepted without the four digit prefix.

TECHNICAL DATA FOR OML WITH 16 MM AND 5/8 IN CYLINDRICAL SHAFT

Type			OML	OML	OML	OML
Motor size			8	12.5	20	32
Geometric displacement	cm ³ [in ³]		8.0 [0.49]	12.5 [0.77]	20.0 [1.22]	32.0 [1.96]
Max. speed	min ⁻¹ [rpm]	cont.	2000	1280	800	500
		int. ¹⁾	2500	1600	1000	625
Max. torque	Nm [lbf-in]	cont.	7 [60]	11 [100]	18 [160]	29 [260]
		int. ¹⁾	13 [120]	20 [180]	32 [280]	51 [450]
		peak ²⁾	14 [125]	22 [200]	36 [320]	57 [500]
Max. output	kW [hp]	cont.	1.1 [1.5]	1.1 [1.5]	1.1 [1.5]	1.1 [1.5]
		int. ¹⁾	2.0 [2.7]	2.0 [2.7]	2.0 [2.7]	2.0 [2.7]
Max. pressure drop	bar [psi]	cont.	70 [1020]	70 [1020]	70 [1020]	70 [55] ³⁾ [1020] [800] ³⁾
		int. ¹⁾	125 [1810]	125 [1810]	125 [85] ³⁾ [1810] [1230] ³⁾	125 [55] ³⁾ [1810] [800] ³⁾
		peak ²⁾	140 [2030]	140 [2030]	140 [85] ³⁾ [2030] [1230] ³⁾	140 [55] ³⁾ [2030] [800] ³⁾
Max. oil flow	l/min [USgal/min]	cont.	16 [4.2]	16 [4.2]	16 [4.2]	16 [4.2]
		int. ¹⁾	20 [5.3]	20 [5.3]	20 [5.3]	20 [5.3]
Max. starting pressure with unloaded shaft	bar [psi]		4 [60]	4 [60]	4 [60]	4 [60]
Min. starting torque	at max. press. drop cont.		5 [45]	9 [80]	15 [135]	24 [210]
	at max. press. drop int. ¹⁾		10 [90]	16 [140]	27 [240]	42 [370]
Min. speed ⁴⁾	min ⁻¹ [rpm]		50	50	50	50

Type			Max. inlet pressure
OML 8 - 32	bar [psi]	cont.	125 [1810]
	bar [psi]	int. ¹⁾	140 [2030]
	bar [psi]	peak ²⁾	140 [2030]

¹⁾ Intermittent operation: the permissible values may occur for max. 10% of every minute.

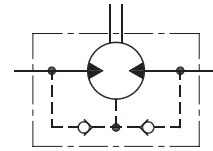
²⁾ Peak load: the permissible values may occur for max. 1% of every minute.

³⁾ Max. pressure drop in applications with a large moment of inertia and frequent stops or reversings.

⁴⁾ Operation at lower speed may be slightly less smooth.

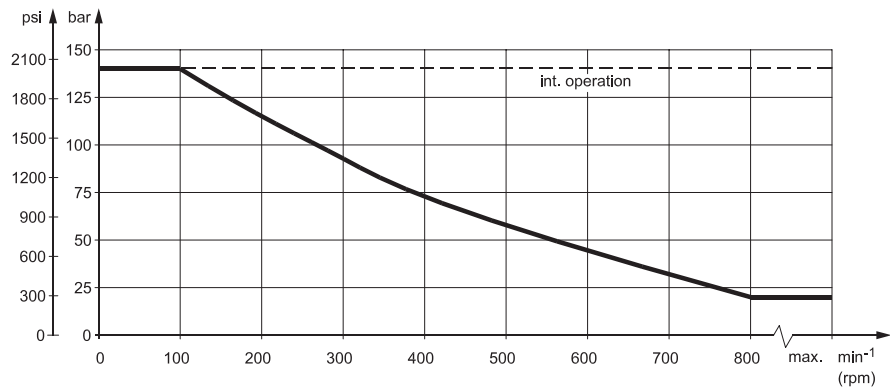
**MAX. PERMISSIBLE
 SHAFT SEAL PRESSURE**

OML has incorporated check valves which ensure that the pressure on the shaft seal never exceeds the pressure in the returnline



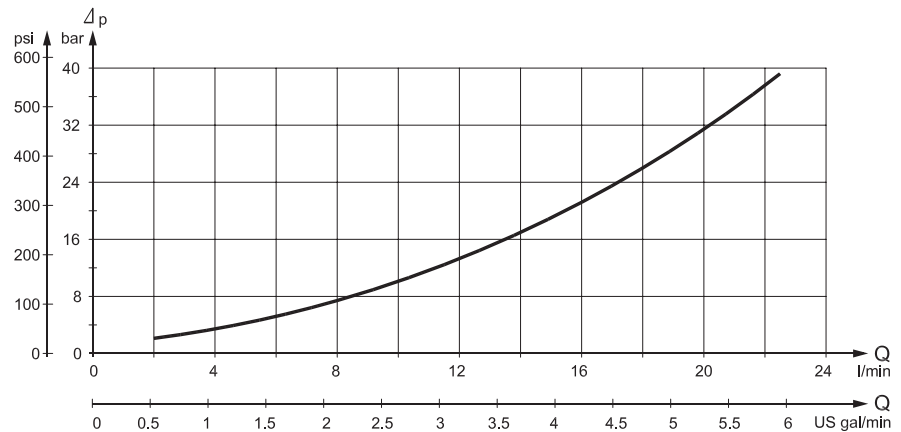
151-1316.10

Max. return pressure (max. pressure on shaft seal)



151-1671.10

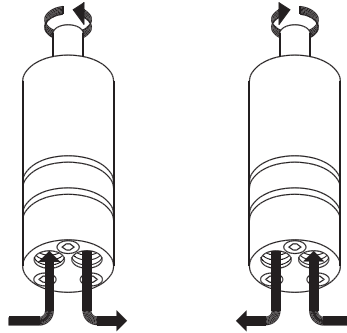
**PRESSURE DROP IN
 MOTOR**



151-1415.10

The curve applies to an unloaded motor shaft and an oil viscosity of 35 mm²/s [165 SUS]

**DIRECTION OF SHAFT
ROTATION**



151-1309.10

**PERMISSIBLE SHAFT
LOADS FOR OML**

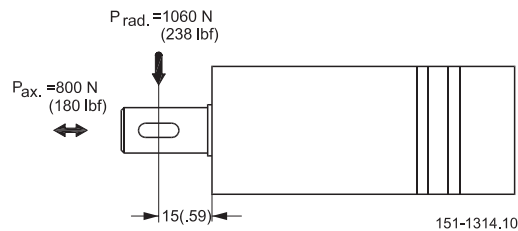
The permissible radial shaft load ($P_{rad.}$) is calculated from the distance (l) between the point of load and the mounting surface:

$$P_{rad.} = \frac{84500}{64.5 + l} \text{ N (l in mm; } l \leq 80)$$

$$P_{rad.} = \frac{748}{254 + l} \text{ lbf (l in inch; } l \leq 3.15)$$

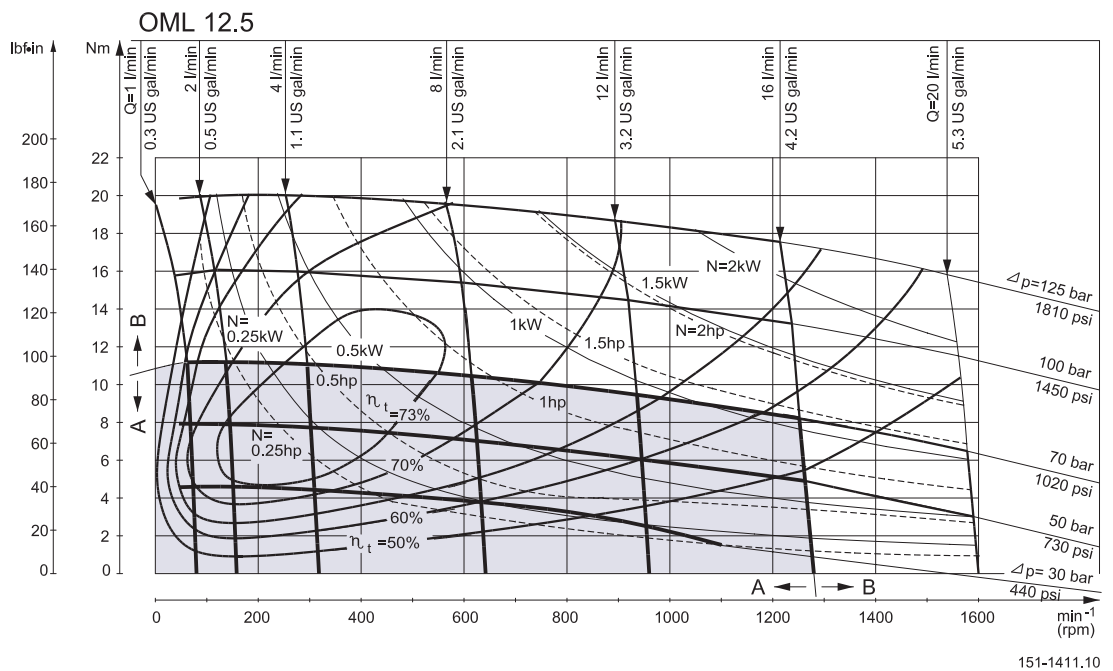
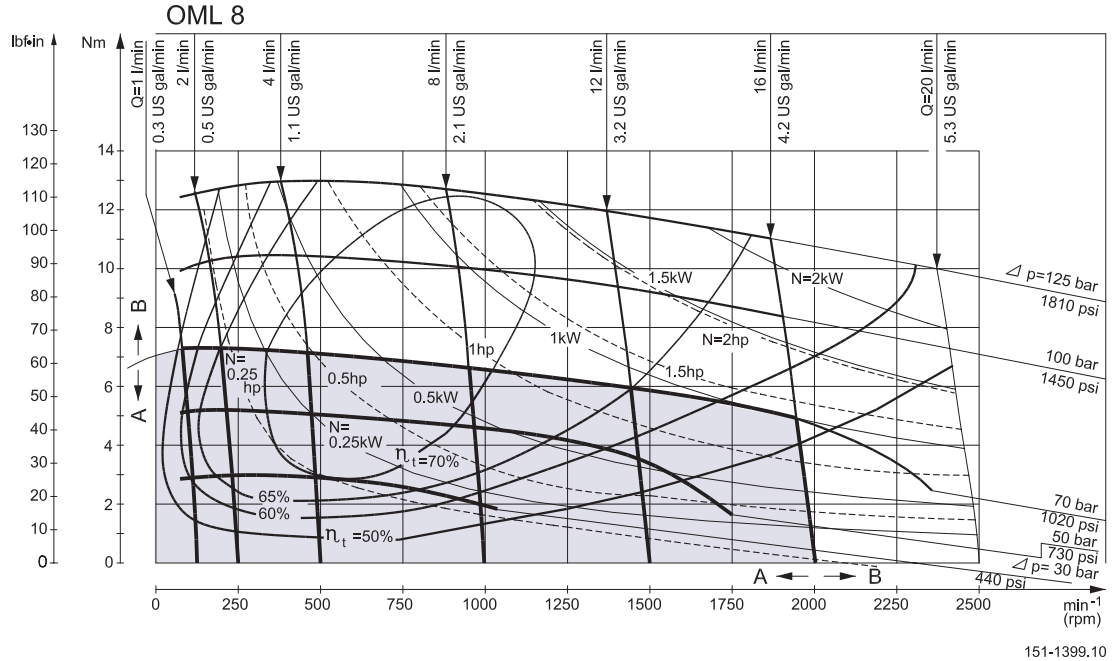
The drawing shows the permissible radial load when $l = 15 \text{ mm [0.59 in]}$.

The calculated shaft load should never exceed the permissible value.



151-1314.10

FUNCTION DIAGRAMS



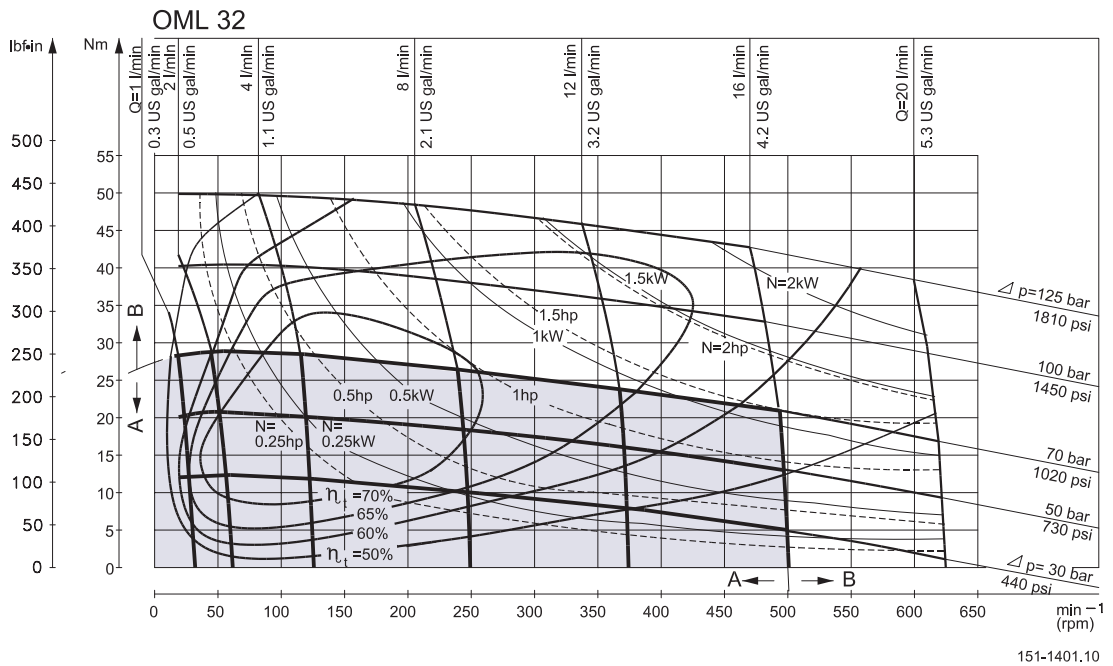
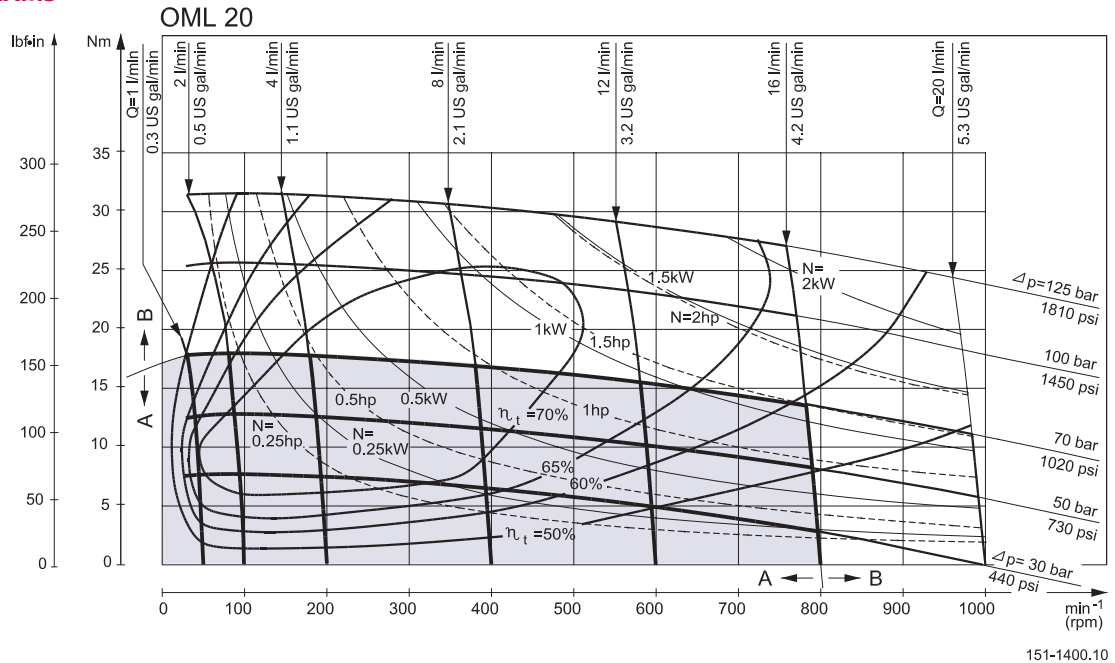
Explanation of function diagram use, basis and conditions can be found on page 4.

- A: Continuous range
- B: Intermittent range (max. 10% operation every minute)

Max. permissible continuous/intermittent pressure drop for the actual shaft version can be found on page 8.

Note: Intermittent pressure drop and oil flow must not occur simultaneously.

FUNCTION DIAGRAMS



Explanation of function diagram use, basis and conditions can be found on page 4.

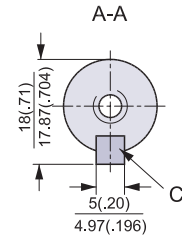
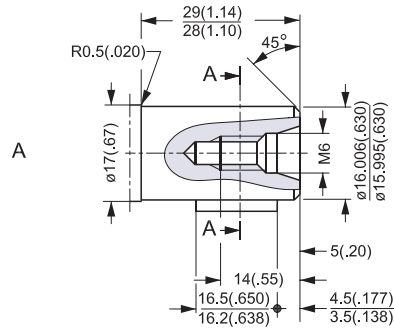
- A: Continuous range
- B: Intermittent range (max. 10% operation every minute)

Max. permissible continuous/intermittent pressure drop for the actual shaft version can be found on page 8.

Note: Intermittent pressure drop and oil flow must not occur simultaneously.

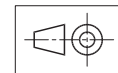
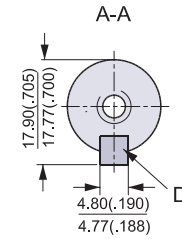
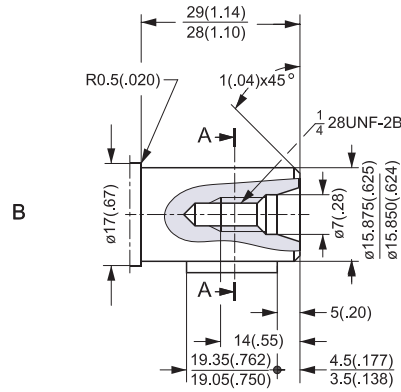
SHAFT VERSION

- A: Cylindrical shaft
16 mm
- C: Parallel key
A5 × 5 × 16
DIN 6885



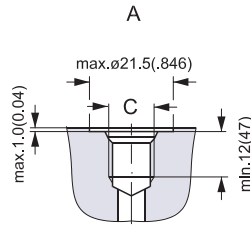
US version

- B: Cylindrical shaft
 $\frac{5}{8}$ "
- D: Parallel key
 $\frac{3}{16} \times \frac{3}{16} \times \frac{3}{4}$ in
B.S. 46

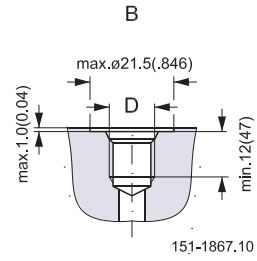


151-1865.10

PORT THREAD VERSIONS



A: G main ports
C: ISO 228/1 - G¹/₄



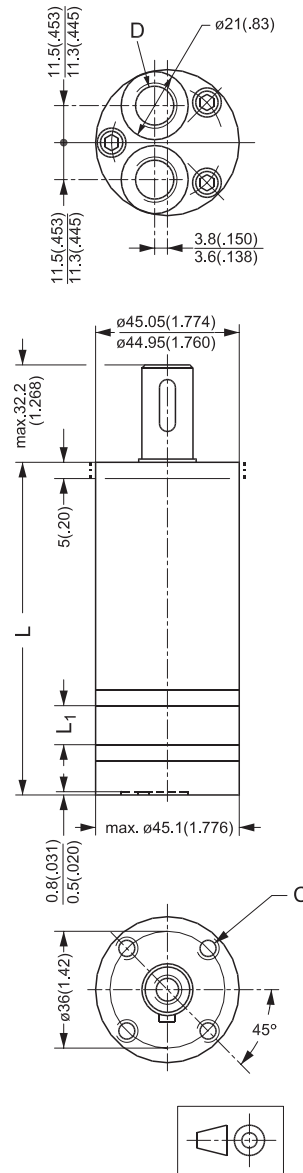
B: UNF main ports
D: ⁷/₁₆ - 20 UNF
O-ring boss port

DIMENSIONS

OML.
 End port version.

Type	L _{max.}	L ₁ mm (in)
OML 8	102.5 [4.04]	4.1 [0.16]
OML 12.5	104.8 [4.13]	6.4 [0.25]
OML 20	108.6 [4.28]	10.2 [0.40]
OML 32	114.7 [4.53]	16.3 [0.64]

C: M5; 15 mm [0.59 in] deep
 D: G 1/4; 12 mm [0.47 in] deep



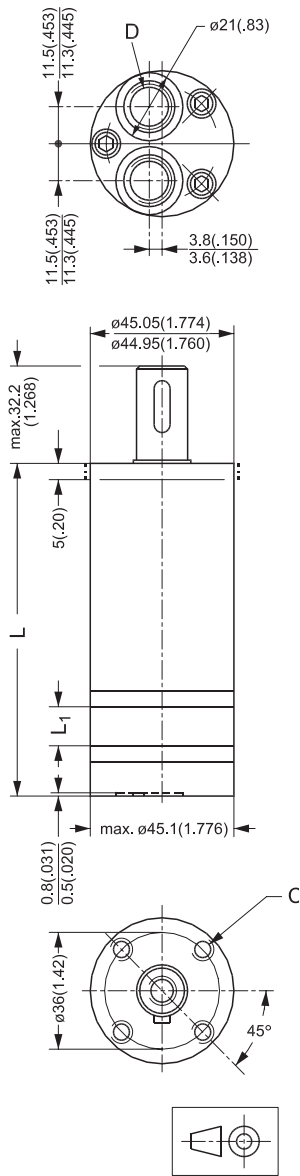
151-1315.10

DIMENSIONS

OML.
 End port version.

Type	L _{max.}	L ₁ mm [in]
OML 8	102.5 [4.04]	4.1 [0.16]
OML 12.5	104.8 [4.13]	6.4 [0.25]
OML 20	108.6 [4.28]	10.2 [0.40]
OML 32	114.7 [4.53]	16.3 [0.64]

C: 10 - 32 UNF;
 15 mm [0.59 in] deep
 D: 7/16 - UNF;
 12 mm [0.47 in] deep
 O-ring boss port



151-1315.10.22



OML and OMM
Technical Information
Notes

NOTES